

HyperMesh 14.0.130 update



Model Browser Updates

The image shows three sequential screenshots of the Altair Model Browser interface. The first screenshot shows the 'Entities' list with 'Components (776)' selected. A blue arrow points from this selection to the second screenshot, which shows the 'Components' table with '82_fenderwhwellbrk.tR' selected. A green arrow points from this selection to the third screenshot, which shows the 'Properties' table for the selected component. A red arrow points from the 'Properties' table back to the 'Entities' list. The text 'Double Click!' is written in the center of the screenshots.





Double Click!


Components	ID	Color	Icon
82_fenderwhwellbrk.tR	2000001	Red	Component icon
393_enginemountrearoutertube	2000002	Green	Component icon
2_bumperplastic	2000003	Blue	Component icon

Materials	ID	Color	Defined Type
MATL1_2000006	2000006	Red	ELASTIC
MATL1_2000027	2000027	Green	ELASTIC
MATL1_2000034	2000034	Blue	ELASTIC

Properties	ID	Color	Defined Type	Cs
SectBeam_2000486	2000486	Red	LINE	Sr
SectBeam_2000514	2000514	Green	LINE	Sr
SectBeam_2000520	2000520	Blue	LINE	Sr

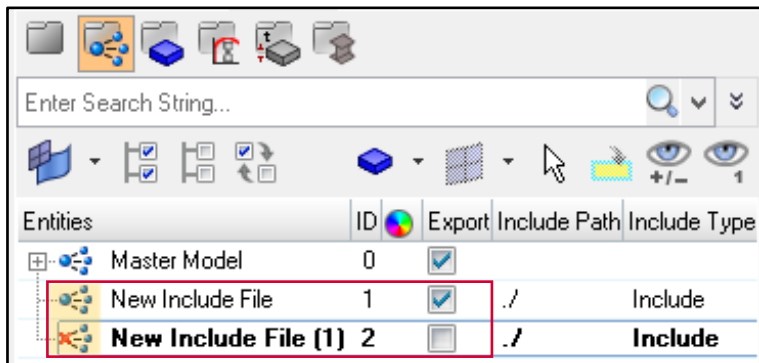
Model Browser 속 View 메뉴로의 이동

- Include View ()
- Component View ()
- Material View ()
- Property View ()



Model View()에서 Entity 상위 폴더를 Double click 하면 해당 Entity와 관련된 View 로 이동됨

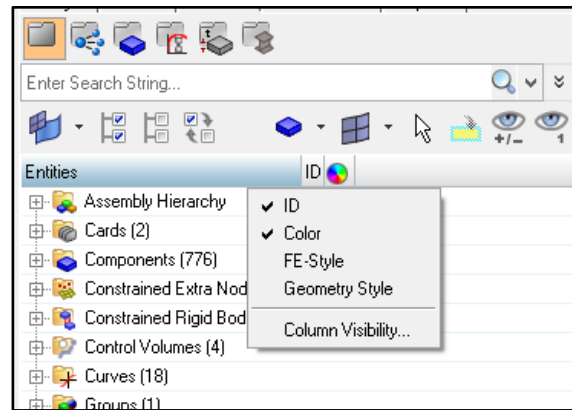
>> 해당 Entity 에 대한 상세 정보 확인

Model Browser Updates



아이콘을 통해 Include file 의 export 여부 확인

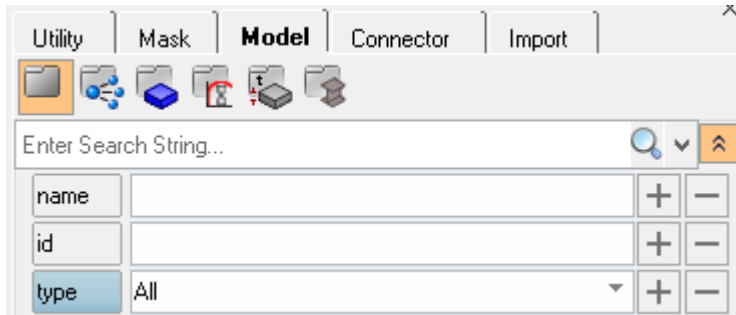
- Export 함 ()
- Export 하지 않음 ()



View 상에서 확인하고자 하는 목록 관리

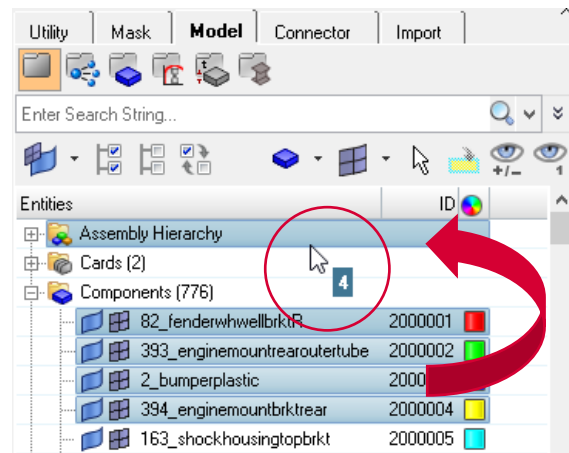
- ID
- Color
- FE-Style 등

Model Browser Updates



사용하기 쉽게 변경된 **Filtering** 기능

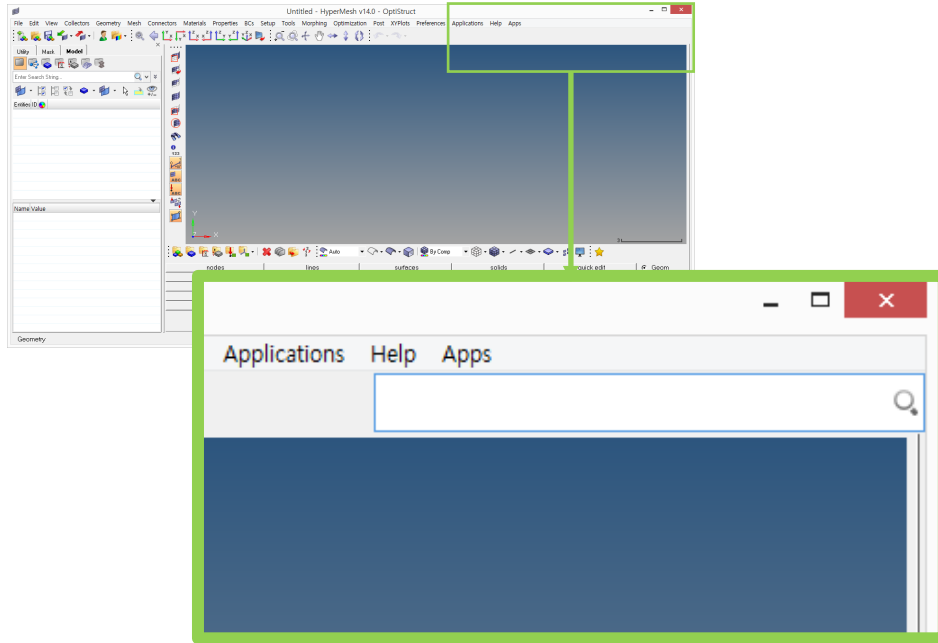
- Name, ID, Entity 종류별 적용 가능
- +, - 버튼을 통해 리스트 제거 및 추가



드래그하고 있는 **Entity** 개수 파악 기능

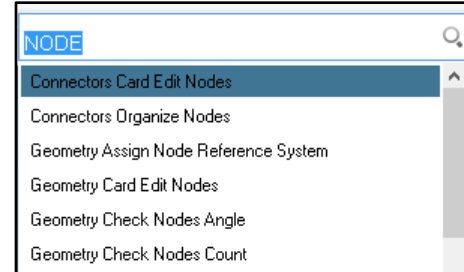
- 마우스 커서 옆에 숫자로 표시됨
- Model browser 에서 적용

Quick Access Tool

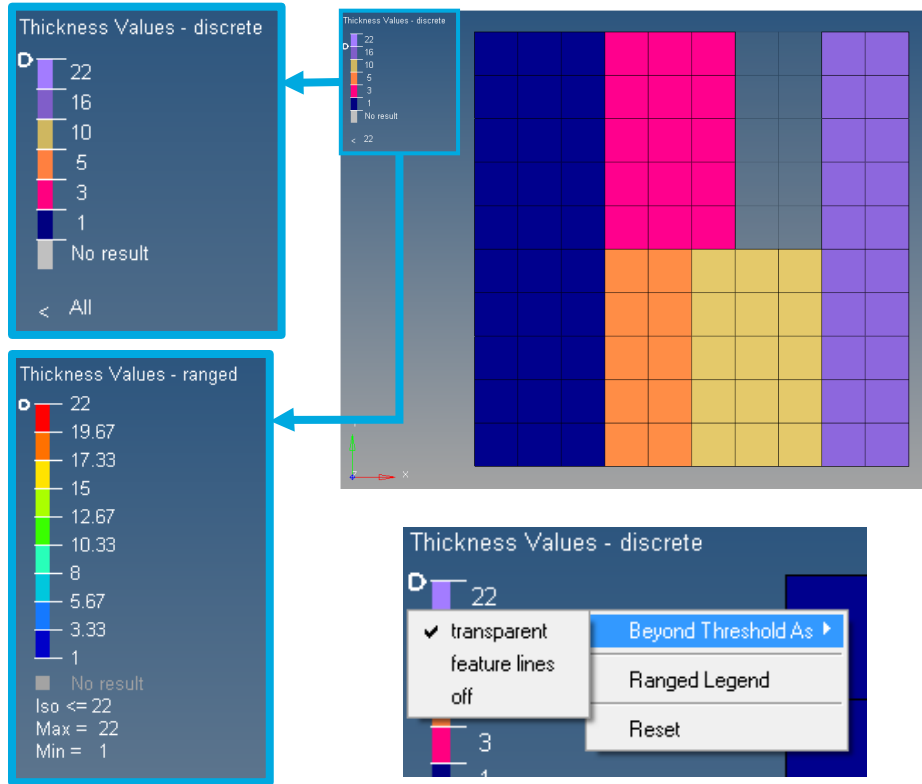


원하는 기능과 관련된 키워드를 입력하여
관련 패널 및 창으로 이동해주는 기능



- 활성화 방법 : **Ctrl + F**
- 입력한 키워드와 관련 항목 중 선택
ex) **node** 를 입력한 경우



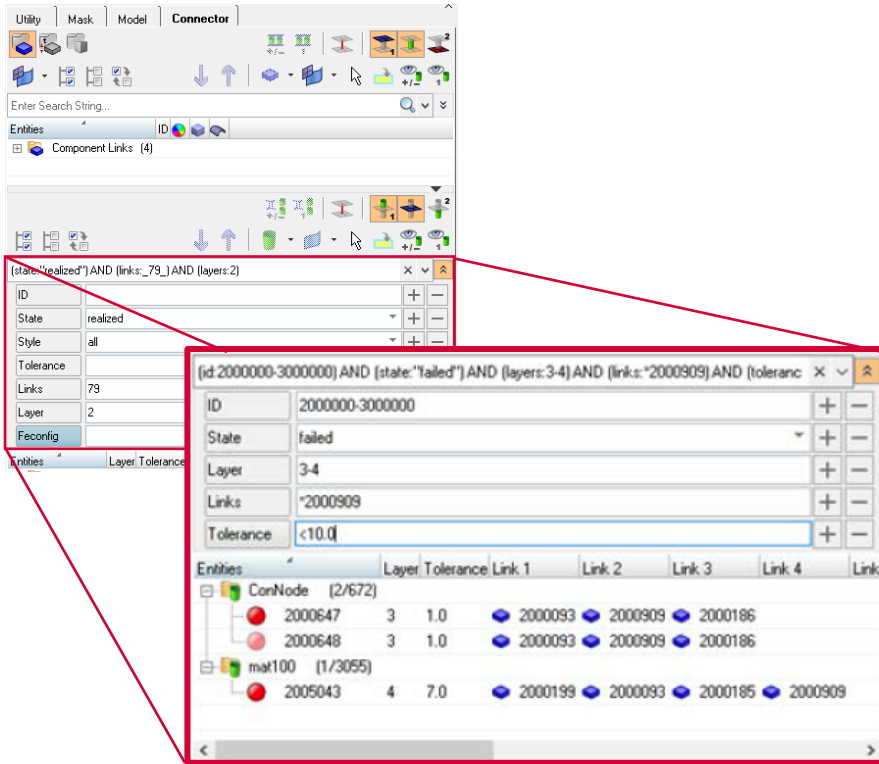
Element Thickness View



요소 두께를 확인하는 기능

- 사용 방법 : 하단 아이콘 중  By Thickness ▼
- 보는 방식
 - discrete : Assign 된 그 값으로 표시
 - ranged : 최소/최대값 사이 범위로 표시
- 슬라이드 바 () 를 통해 범위 지정 가능
 - 범위 외 영역에 대한 설정 가능
(transparent / feature line / off)
 - 마우스 오른쪽 버튼을 클릭하여 설정

Connector Browser



Connector 정보를 이용한 Filtering 기능

- Model browser 의 Filter 와 유사
- +, - 버튼을 통해 Filtering 할 항목 지정
- ID, State, Layer 등의 항목 지원
- Filter 기능을 종료하고자 하는 경우에는
x 표시 아이콘을 클릭

`(id:2000000-3000000) AND (state:"failed") AND (layers:3-4) AND (links:"2000909) AND (toleranc` x

Area connector – Projection Control Method

Name	Value
ID	8
Coordinates Info	
Connector Test Points	4
Test Points Coordinates Data	
General Info	
Config Name	rigid
Solver	optistruct
Tolerance	30.0
MCF File	C:/Users/sohyung/Desktop/tmp/test24_130...
Property and Material Info	
Property Script	no/skip post script
Element Organize	elems to current comp
Property Option	no property
Connectivity Info	
Connectivity	mesh dependent
Adjust Option	adjust realization
Adjust Realization	project and find nodes
FE Info	
Projection Control Methods	none
Nonnormal	<input type="checkbox"/>
Link Option	closest

none
 normal to connector
 normal to links
 along discrete direction
 normal to link 1
 normal to link 2

Area connector 관련 project 옵션

- 연결시키고자 하는 component에 대해 투영시키는 방법에 대한 옵션
- 6가지의 방법 중 선택 가능

